

BENJAMIN D. TAYLOR

LEAVING WHITE

For Orchestra

INSTRUMENTATION

SCORE IN C

(Instruments that sound at the octave or double octave are notated at their written pitch.)

2 Flutes (2nd doubles Piccolo)
2 Oboes
2 Clarinets in Bb (2nd doubles Bass Clarinet)
2 Bassoons

4 Horns in F
3 Trumpets in C
2 Trombones
Bass Trombone
Tuba

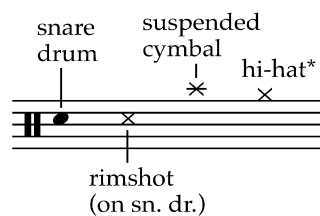
Timpani
3 Percussion

Harp
Piano

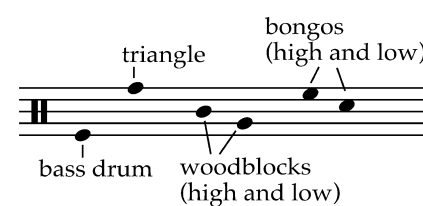
Strings

PERCUSSION

1.) snare drum, suspended cymbal, hi-hat*, crotales (high octave)

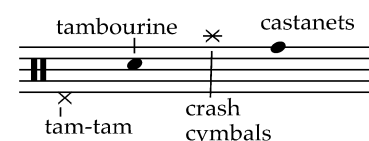


2.) bass drum, bongos (high and low), 2 woodblocks (high and low), bell tree, triangle



*Hi-hat: The pedal position is indicated with (o) signifying open and (+) closed. All notes not preceded by a tie are articulated by the sticks. Notes preceded by a tie are articulated by the closing of the hi-hats with the foot pedal.

3.) crash cymbals, tambourine, tam-tam, castanets (preferably mounted), glockenspiel



Duration: 12 minutes

Program Note

In one Chinese tradition of painting, the artists intentionally leave large blank spaces in their renditions of natural landscapes. The blank spaces are intended to grant the viewers more room in using their imaginations. Now I know what you're thinking - but don't worry - I didn't compose this piece with large, silent spaces, leaving the listeners to imagine their own music. The title, **Leaving White**, refers instead to my own experience writing this piece. As a composer, I have found inspiration for my music in a variety of places: photography, life experiences, traffic signs, the periodic table of elements, and even internet search engines. But with this piece my compositional process was much different. I consciously tried to remove all extra-musical associations from my mind in order to leave my mind blank; thus leaving white.

LEAVING WHITE

Benjamin D. Taylor (b.1983)
(ASCAP)

Shattering ♩ = 66

Musical score for woodwinds, brass, and percussion. The score is written in 4/4 time with a tempo of 66 beats per minute. The instruments include Piccolo 2, Flute 1, Oboe 1, Oboe 2, Clarinet 1 in B \flat , Clarinet 2 in B \flat , Bassoon 1, Bassoon 2, Horn 1,3 in F, Horn 2,4 in F, Trumpet 1 in C, Trumpet 2 in C, Trumpet 3 in C, Trombone 1, Trombone 2, Bass Trombone, Tuba, Timpani, Percussion 1, Percussion 2, and Percussion 3. The score features various dynamics such as *ff*, *f*, *mp*, *p*, *mf*, *pp*, and *sfz*. Performance instructions include *Solo cantabile*, *gliss.*, *stopped*, *con sord.*, *harmon (no stem)*, *hard mallets*, *(dampen)*, *hi-hat*, *glock*, and *L.v.*. The score is divided into measures, with some measures containing triplets and slurs.

Shattering ♩ = 66

Musical score for strings. The instruments include Violin I, Violin II, Viola, Cello, and Contrabass. The score is written in 4/4 time with a tempo of 66 beats per minute. Performance instructions include *pp*, *pizz.*, *sul E*, *sul pont.*, *sul D*, *sul G*, and *sul A*. The score features long, sustained notes with slurs and dynamic markings.

1

2

3

4

5

6

A

Picc. 2

Fl. 1

Ob. 1,2

Cl. 1

Cl. 2

Bsn. 1

Bsn. 2

Hn. 1,3

Hn. 2,4

Tpt. 1,2,3

Tbn. 1

Tbn. 2

B. Tbn.

Tuba

Timp.

Perc. 1 (hi-hat)

Perc. 2 (bs. dr.)

Perc. 3 (cast.)

Hp.

Pno.

Vln. I

Vln. II

Vla.

Vc.

Cb.

mp

p

f

ff

mf

pp

con sord.

straight mute

castanets

glock

crot.

ord.

sul E sul pont.

sul D sul pont.

sul G sul pont.

sul A sul pont.

arco

pizz.

7

8

9

10

11

Picc. 2
 Fl. 1
 Ob. 1,2
 Cl. 1,2
 Bsn. 1,2
 Hn. 1,3
 Hn. 2,4
 Tpt. 1,2,3
 Tbn. 1,2
 B. Tbn.
 Tuba
 Timp.
 Perc. 1
 Perc. 2
 Perc. 3
 Hp.
 Pno.
 Vln. I
 Vln. II
 Vla.
 Vc.
 Cb.

Solo
 mp → mf
 (Solo)
 mf
 pp → mf → pp
 soft mallets
 p → pp
 arco
 pizz.

12

13

14

15

16

Picc. 2

Fl. 1

Ob. 1,2

Cl. 1

Cl. 2

Bsn. 1

Bsn. 2

Hn. 1,3

Hn. 2,4

Tpt. 1

Tpt. 2

Tpt. 3

Tbn. 1

Tbn. 2

B. Tbn.

Tuba

Timp.

Perc. 1 (hi-hat)

Perc. 2 (bs. dr.)

Perc. 3 (cast.)

Hp.

Pno.

Vln. I

Vln. II

Vla.

Vc.

Cb.

17

18

19

20

21

This is only a sample score

*If you'd like a full perusal score or a performance score
please contact me at*

benjamintaylormusic@gmail.com

Fl. 1
 Fl. 2
 Ob. 1
 Ob. 2
 Cl. 1
 Cl. 2
 Bsn. 1,2
 Hn. 1,3
 Hn. 2,4
 Tpt. 1
 Tpt. 2
 Tpt. 3
 Tbn. 1
 Tbn. 2
 B. Tbn.
 Tuba
 Timp.
 Perc. 1 (sus. cym.)
 Perc. 2 (bs. dr.)
 Perc. 3 (crsh cyms)
 Hp.
 Pno.
 Vln. I
 Vln. II
 Vla.
 Vc.
 Cb.

Musical score for a symphony orchestra, page 41. The score includes staves for woodwinds (Flutes, Oboes, Clarinets, Bassoons, Horns, Trumpets, Trombones, Tuba), percussion (Cymbals, Snare Drum, Crash Cymbals, Timpani), harp, piano, and strings (Violins I and II, Viola, Violoncello, Contrabass). The score features various musical notations including notes, rests, dynamics (ff, p), articulation (accents, slurs), and performance instructions (div., gliss.). The key signature is B-flat major, and the time signature is 3/4. The score is divided into measures, with page numbers 254, 255, and 256 indicated at the bottom.

Fl. 1
 Fl. 2
 Ob. 1
 Ob. 2
 Cl. 1
 Cl. 2
 Bsn. 1,2
 Hn. 1,3
 Hn. 2,4
 Tpt. 1
 Tpt. 2
 Tpt. 3
 Tbn. 1
 Tbn. 2
 B. Tbn.
 Tuba
 Timp.
 Perc. 1 (sus. cym.)
 Perc. 2 (bs. dr.)
 Perc. 3 (crsh cym.)
 Hp.
 Pno.
 Vln. I
 Vln. II
 Vla.
 Vc.
 Cb.

Musical score for orchestra and strings, measures 257-260. The score is in 3/4 time and features a variety of instruments including woodwinds, brass, percussion, and strings. The woodwinds (Flutes, Oboes, Clarinets, Bassoons) play melodic lines with sixteenth-note patterns and triplets. The brass section (Horns, Trumpets, Trombones, Tuba) provides harmonic support with sustained notes and rhythmic patterns. The percussion section includes suspended cymbals, bass drum, and crash cymbals. The piano and harp provide accompaniment with chords and arpeggios. The strings (Violins, Viola, Violoncello, Contrabass) play sustained notes and rhythmic patterns. The score includes dynamic markings such as *ff*, *p*, *f*, and *pp*, and articulation marks like accents and slurs. Measure numbers 257, 258, 259, and 260 are indicated at the bottom of the page.

Fl. 1

Fl. 2

Ob. 1, 2

Cl. 1

Cl. 2

Bsn. 1, 2

Hn. 1, 3

Hn. 2, 4

Tpt. 1

Tpt. 2

Tpt. 3

Tbn. 1

Tbn. 2

B. Tbn.

Tuba

Timp.

Perc. 1 (sus. cym.)

Perc. 2 (bs. dr.)

Perc. 3

Hp.

Pno.

Vln. I

Vln. II

Vla.

Vc.

Cb.

261 262 263 264 265 266 267 268

Fl. 1

Fl. 2

Ob. 1,2

Cl. 1,2

Bsn. 1,2

Hn. 1,3

Hn. 2,4

Tpt. 1

Tpt. 2

Tbn. 1

Tbn. 2

Tuba

Timp.

Perc. 1 (hi-hat)

Perc. 2

Perc. 3

Vln. I

Vln. II

Vla.

Vc.

Cb.

276

277

278

279

280

281

282

fp

pp

mp

p

pp

fp

mf

hi-hat

p

ff

p

ff

p

ff

fp

p

pp

mp

p

pp

p

(p)

f

harmon (no stem)

sfz

f

con sord.

sfz

con sord.

sfz

sfz

sul G

(slow gliss)

pizz.

f

pizz.

f

T A bit slower ♩ = 54

Fl. 1

Fl. 2

Ob. 1

Ob. 2

Cl. 1

Cl. 2

Bsn. 1,2

Hn. 1,3

Hn. 2,4

Tpt. 1

Tpt. 2

Tbn. 1,2,3

Tuba

Timp.

Perc. 1 (crot.)

Perc. 2 (bs. dr.)

Perc. 3 (glock)

Hp.

Pno.

T A bit slower ♩ = 54

Vln. I

Vln. II

Vla.

Vc.

Cb.

gli. altri.

sul E sul pont.

sul D sul pont.

sul pont. senza vib.

sul A sul pont.

Fl. 1
Fl. 2
Ob. 1
Ob. 2
Cl. 1
Cl. 2
Bsn. 1
Bsn. 2
Hn. 1,3
Hn. 2,4
Tpt. 1
Tpt. 2
Tpt. 3
Tbn. 1
Tbn. 2
B. Tbn.
Tuba
Timp.
Perc. 1
Perc. 2
Perc. 3
Vln. I
Vln. II
Vla.
Vc.
Cb.

289 290 291 292

