


Walking Man

Benjamin Taylor

GROOVE


- The eighth note is always equal regardless of time signature.
- Eighth note = about 175 m.m
- Entrances are as follows: Guitar, Piano, Bass and Drums,

Guitar:




Play as constant eighth notes in any order, using accents to sound like you are changing around in odd meters.

Piano:



Enter a 16th note off from guitar making his notes sound like offbeats. May gradually improvise off this figure.

Bass and Drums:



Enter in 7/8 feel (X notehead= slap strings)
Play 6 times (Piano will play its box 7 more times)

RIF

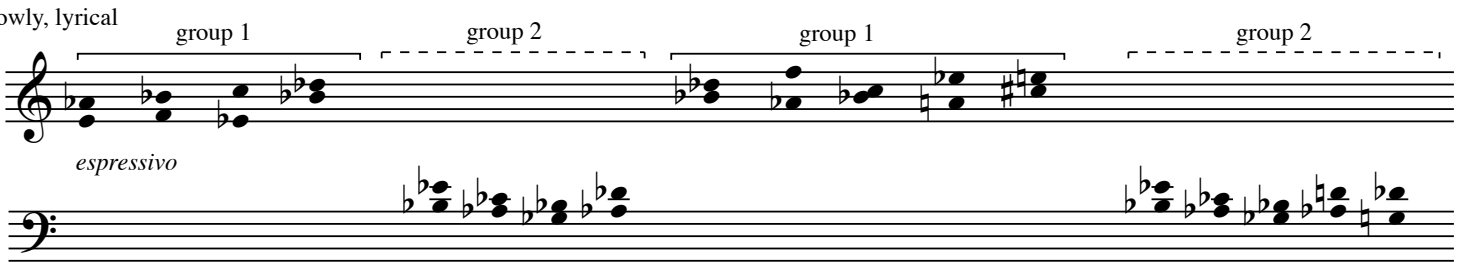


HEAD

A free, lyrical 'call and response' in the horn section.
Rhythm section repeats groove.

Horns: Group 1= Trumpet and Alto, Group 2=Trombone and Tenor

Slowly, lyrical



espressivo

The trumpet/trombone is the "leader" and will play the top notes. The alto/tenor is the "follower" and will play the lower notes. The rhythm is free but the leader must wait for the follower in order to proceed to the next note.

FORM

- Groove
- Riff
- Head
- Riff
- Head (change leader)
- Riff
- Solos (Riff between solos)
- Riff
- Head
- Riff

SOLOS

Solo in pairs as call and response.
Use scale indicated at right.
Imitative lines are encouraged.



Bb

Walking Man

Benjamin Taylor

GROOVE

- The eighth note is always equal regardless of time signature.
- Eighth note = about 175 m.m
- Entrances are as follows: Guitar, Piano, Bass and Drums,

Guitar:

Play as constant eighth notes in any order, using accents to sound like you are changing around in odd meters.

Piano:

Enter a 16th note off from guitar making his notes sound like offbeats. May gradually improvise off this figure.

Bass and Drums:

Enter in 7/8 feel (X notehead= slap strings)
Play 6 times (Piano will play its box 7 more times)

RIFF

HEAD

A free, lyrical 'call and response' in the horn section.
Rhythm section repeats groove.

Horns: Group 1= Trumpet and Alto, Group 2=Trombone and Tenor

Slowly, lyrical

group 1 group 2 group 1 group 2

espressivo

espressivo

The trumpet/trombone is the "leader" and will play the top notes. The alto/tenor is the "follower" and will play the lower notes. The rhythm is free but the leader must wait for the follower in order to proceed to the next note.

FORM

- Groove
- Riff
- Head
- Riff
- Head (change leader)
- Riff
- Solos (Riff between solos)
- Riff
- Head
- Riff

SOLOS

Solo in pairs as call and response.
Use scale indicated at right.
Imitative lines are encouraged.

Concert


Walking Man

Benjamin Taylor

GROOVE


- The eighth note is always equal regardless of time signature.
- Eighth note = about 175 m.m
- Entrances are as follows: Guitar, Piano, Bass and Drums,

Guitar:




Play as constant eighth notes in any order, using accents to sound like you are changing around in odd meters.

Piano:



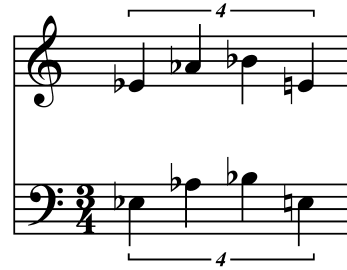
Enter a 16th note off from guitar making his notes sound like offbeats. May gradually improvise off this figure.

Bass and Drums:



Enter in 7/8 feel (X notehead= slap strings)
Play 6 times (Piano will play its box 7 more times)

RIF

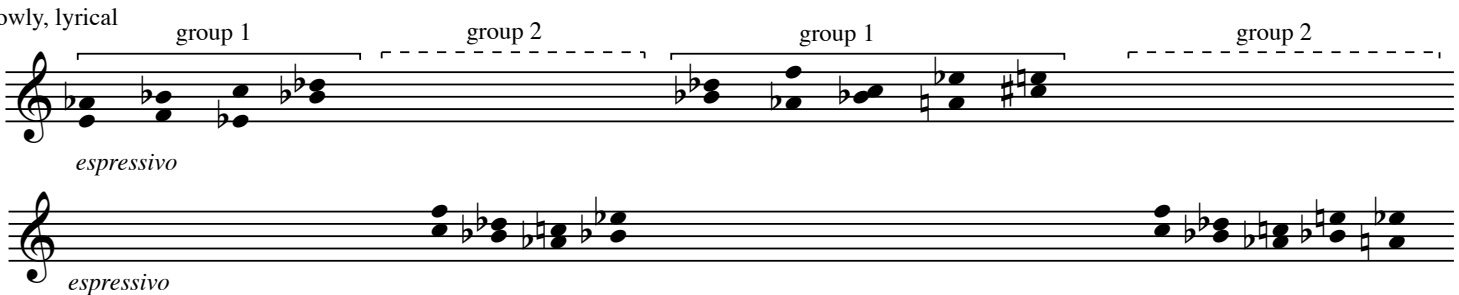


HEAD

A free, lyrical 'call and response' in the horn section.
Rhythm section repeats groove.

Horns: Group 1= Trumpet and Alto, Group 2=Trombone and Tenor

Slowly, lyrical



The trumpet/trombone is the "leader" and will play the top notes. The alto/tenor is the "follower" and will play the lower notes. The rhythm is free but the leader must wait for the follower in order to proceed to the next note.

FORM

- Groove
- Riff
- Head
- Riff
- Head (change leader)
- Riff
- Solos (Riff between solos)
- Riff
- Head
- Riff

SOLOS

Solo in pairs as call and response.
Use scale indicated at right.
Imitative lines are encouraged.



Bb Tenor

Walking Man

Benjamin Taylor

GROOVE

- The eighth note is always equal regardless of time signature.
- Eighth note = about 175 m.m
- Entrances are as follows: Guitar, Piano, Bass and Drums,

Guitar:



Play as constant eighth notes in any order, using accents to sound like you are changing around in odd meters.

Piano:



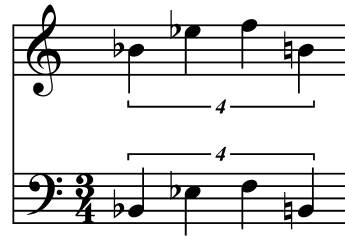
Enter a 16th note off from guitar making his notes sound like offbeats. May gradually improvise off this figure.

Bass and Drums:



Enter in 7/8 feel (X notehead= slap strings)
Play 6 times (Piano will play its box 7 more times)

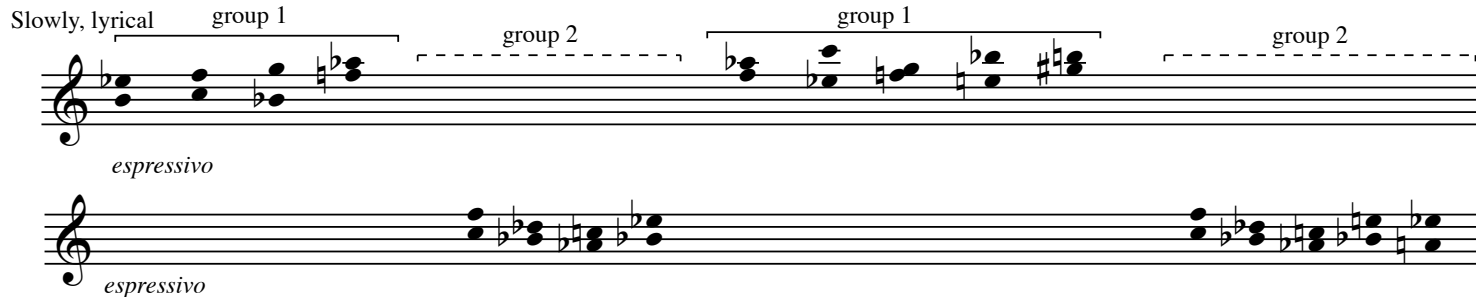
RIF



HEAD

A free, lyrical 'call and response' in the horn section.
Rhythm section repeats groove.

Horns: Group 1= Trumpet and Alto, Group 2=Trombone and Tenor



The trumpet/trombone is the "leader" and will play the top notes. The alto/tenor is the "follower" and will play the lower notes. The rhythm is free but the leader must wait for the follower in order to proceed to the next note.

FORM

- Groove
- Riff
- Head
- Riff
- Head (change leader)
- Riff
- Solos (Riff between solos)
- Riff
- Head
- Riff

SOLOS

Solo in pairs as call and response.
Use scale indicated at right.
Imitative lines are encouraged.



Eb