

BENJAMIN D. TAYLOR

# AT WHICH POINT

*For Wind Symphony*

# INSTRUMENTATION

## SCORE IN C

(Instruments that sound at the octave or double octave are notated at their written pitch.)

Piccolo  
2 Flutes  
2 Oboes  
English Horn  
2 Bassoons  
Contrabassoon  
3 Clarinets in Bb  
Bass Clarinet

Soprano Saxophone  
Alto Saxophone  
Tenor Saxophone  
Baritone Saxophone

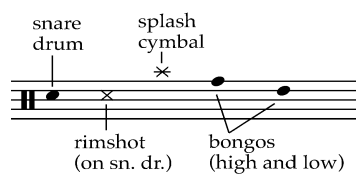
4 Horns in F  
3 Trumpets in Bb  
2 Trombones  
Bass Trombone  
Euphonium  
Tuba

Timpani  
5 Percussion  
Piano  
Contrabass

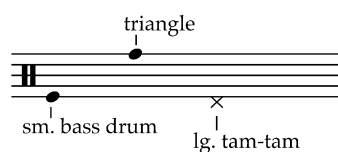
(Number of players doubling each part at discretion of conductor in keeping with a balanced sound.)

## PERCUSSION

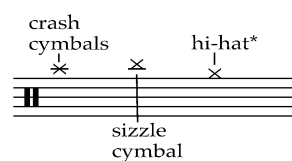
1.) snare drum, splash cymbal, bongos



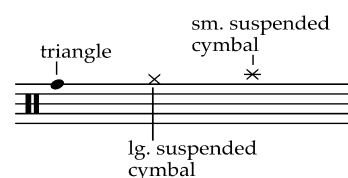
2.) small bass drum, triangle, large tam-tam



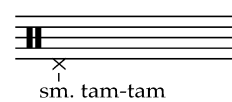
3.) sizzle cymbal, crash cymbals, hi-hat\*, crotales, chimes



4.) vibraphone, triangle, small suspended cymbal, large suspended cymbal



5.) glockenspiel, marimba, small tam-tam



\*Hi-hat: The pedal position is indicated with (o) signifying open and (+) closed. All notes not preceded by a tie are articulated by the sticks. Notes preceded by a tie are articulated by the closing of the hi-hats with the foot pedal.

**Duration: 8 minutes**

### Performance Note

The woodwind flurries at letter **F** and **S** are intended to be heard as a chaotic, frantic cluster of sound. The effect is such that it is not metric.

# AT WHICH POINT

Written for Bruce Moss and the  
Bowling Green State University Wind Symphony

Benjamin D. Taylor (b.1983)  
(ASCAP)

♩ = 90

Piccolo *pp* *f*

Flute 1,2 *pp* *f*

Oboe 1,2 *pp* *f*

English Horn *pp* *f*

Bassoon 1,2

Contrabassoon

Clarinet 1,2 in B<sup>b</sup> *pp* *f* Solo (under sax) *pp* *p*

Clarinet 3 in B<sup>b</sup> *pp* *f*

Bass Clarinet *pp* *f*

Soprano Sax. Solo lontano *mf* *mp* *mf*

Alto Sax.

Tenor Sax.

Baritone Sax.

Horn in F 1,3 *pp* *ff*

Horn in F 2,4 *pp* *ff*

Trumpet in B<sup>b</sup> 1,2 *pp* *ff*

Trumpet in B<sup>b</sup> 3 *pp* *ff*

Trombone 1,2 *pp* *ff*

Bass Trombone *pp* *ff*

Euphonium *pp* *ff*

Tuba *pp* *ff*

♩ = 90

Timpani

Percussion 1 [snare drum] *pp* *f*

Percussion 2 [bass drum] *pp* *f* choke!

Percussion 3 [hi-hat] *pp* *f* choke!

Percussion 4 [sus. cym.] *pp* *f* choke! [vibraphone] (take bow and one mallet) *p* *L.v.* [glock] *pp* *f* *w/mallet* *mp*

Percussion 5 *p* *L.v.* *mp*

Piano *pp* *f* *p* *mp* *p*

Contrabass *pp* *ff*

1 2 3 4 5

Picc.

Fl. 1,2

Ob. 1,2

E. Hn.

Bsn. 1,2

C. Bn.

Clar. 1

Clar. 2

B. Cl.

S. Sax.

A. Sax.

T. Sax.

B. Sax.

1,3 Hn.

2,4

1,2 Trum.

3

Tbn. 1,2

B. Tbn.

Euph.

Tuba

Timp.

Perc 1 (sn. dr.)

Perc 2 (tri.)

Perc 3 (crof.)

Perc 4 (vib.)

Perc 5 (glk.)

Pno.

Cb.

Solo (under sax)

*pp* *p*

*p* *mf*

bowed *pp* *mp*

w/mallet *mp*

bowed *pp* *mp*

(drop bow, take 2nd mallet)

*p* *mp* *p* *mf*

A

Picc.

Fl. 1

Fl. 2

Ob. 1

Ob. 2

E. Hn.

Bsn. 1,2

C. Bn.

Clar. 1

Clar. 2

Clar. 3

B. Cl.

S. Sax.

A. Sax.

T. Sax.

B. Sax.

1,3 Hn.

2,4 Hn.

1,2 Trum.

3 Trum.

Tbn. 1,2

B. Tbn.

Euph.

Tuba

A

Timp.

Perc 1 (sn. dr.)

Perc 2 (tri.)

Perc 3 (crot.)

Perc 4 (vib.)

Perc 5 (glk.)

Pno.

Cb.

Picc.

Fl. 1

Fl. 2

Ob. 1,2

E. Hn.

Bsn. 1,2

C. Bn.

Clar. 1

Clar. 2

Clar. 3

B. Cl.

S. Sx.

A. Sx.

T. Sx.

B. Sx.

1,3 Hn.

2,4

1,2 Trum.

3

Tbn. 1,2

B. Tbn.

Euph.

Tuba

Timp.

Perc 1 (sn. dr.)

Perc 2 (tri.)

Perc 3 (cro.)

Perc 4 (vib.)

Perc 5 (glk.)

Pno.

Cb.

Picc.  
 Fl. 1  
 Fl. 2  
 Ob. 1  
 Ob. 2  
 E. Hn.  
 Bsn. 1,2  
 C. Bn.  
 Clar. 1  
 Clar. 2  
 Clar. 3  
 B. Cl.  
 S. Sx.  
 A. Sx.  
 T. Sx.  
 B. Sx.  
 1,3 Hn.  
 2,4 Hn.  
 1,2 Trum.  
 3 Trum.  
 Tbn. 1,2  
 B. Tbn.  
 Euph.  
 Tuba  
 Timp.  
 Perc 1 (sn. dr.)  
 Perc 2 (t. tam)  
 Perc 3 (cro.)  
 Perc 4 (vib.)  
 Perc 5 (glk.)  
 Pno.  
 Cb.

**B**

Picc. *mp* 3 6

Fl. 1 *f* *mp* 6 3 6

Fl. 2 *f* *mp* 6 6 6 6

Ob. 1,2 *f*

E. Hn. -

Bsn. 1,2 *mp* *mf* *mf* a2

C. Bn. -

Clar. 1,2,3 *f*

B. Cl. -

S. Sx. -

A. Sx. -

T. Sx. -

B. Sx. -

Hn. 1,3 *ff* (stopped) +

Hn. 2,4 *ff* (stopped) + *f*

Trum. 1,2 *ff*

Trum. 3 *ff*

Tbn. 1,2 *mp* *mf* *mf* *mf* a2

B. Tbn. *mp* *mf* *mf* *mf*

Euph. *mp* *mf* *mf* *mf*

Tuba *mp* *mf* *mf* *mf*

**B**

Timp. -

Perc 1 (sn. dr.) flick drum head (still with fingernails back and forth motion) *f* *mp* 3 3 3 3 pick up sticks

Perc 2 (t. tam) dampen *mp*

Perc 3 (hihat) *mf* dampen choke!

Perc 4 (vib.) *mf* dampen

Perc 5 (glk.) *mf* dampen

Pno. *f*

Cb. *mf* pizz.



C

Picc. *3* *6* *6* *6* *6* *6*

Fl. 1 *6* *6* *6* *6* *6* *6*

Fl. 2 *6* *6* *6* *6* *6* *6*

Ob. 1,2

E. Hn.

Bsn. 1,2 *pp*

C. Bn.

Clar. 1,2 *mp*

Clar. 3 *mp*

B. Cl.

S. Sx. *mp*

A. Sx.

T. Sx.

B. Sx.

1,3 Hn. *a2 ord.* *mp*

2,4 Hn. *a2 ord.* *mp*

1,2 Trum. *mp*

3 Trum. *mp*

Tbn. 1,2 *pp*

B. Tbn. *pp*

Euph. *pp*

Tuba *pp*

C

Timp.

Perc 1 (sn. dr.) *(w/sticks)* *mp* *p* *3* *mp*

Perc 2 (bs. dr.)

Perc 3 (cr. cym.)

Perc 4 (sus. cym.) *sm. sus. cym.* *pp* *mp*

Perc 5 (glk.)

Pno.

Cb.

**This is only a sample score**

*If you'd like a full perusal score or a performance score  
please contact me at*

*[benjamintaylormusic@gmail.com](mailto:benjamintaylormusic@gmail.com)*

**S** tempo primo ♩ = 90

Picc.

Fl. 1

Fl. 2

Ob. 1

Ob. 2

E. Hn.

Bsn. 1,2

C. Bn.

Clar. 1

Clar. 2

Clar. 3

B. Cl.

S. Sx.

A. Sx.

T. Sx.

B. Sx.

1,3 Hn.

2,4 Hn.

1,2 Trum.

3 Trum.

Tbn. 1,2

B. Tbn.

Euph.

Tuba

**S** tempo primo ♩ = 90

Timp. dampen

Perc 1 (sn. dr.) (rimshot)

Perc 2 (bs. dr.)

Perc 3 (sz. cym.)

Perc 4 (sus. cym.)

Perc 5 (t.tam) tam-tam

Pno.

Cb.

*ff* ad lib. frequent attacks to sustain constant sound at *f*

Picc.

Fl. 1

Fl. 2

Ob. 1

Ob. 2

E. Hn.

Bsn. 1,2

C. Bn.

Clar. 1

Clar. 2

Clar. 3

B. Cl.

S. Sx.

A. Sx.

T. Sx.

B. Sx.

1,3 Hn.

2,4 Hn.

1,2 Trum.

3 Trum.

Tbn. 1,2

B. Tbn.

Euph.

Tuba

Timp.

Perc 1 (sn. dr.)

Perc 2 (bs. dr.)

Perc 3 (hihat)

Perc 4 (sus. cym.)

Perc 5 (t.tam)

Pno.

Cb.

Picc.

Fl. 1

Fl. 2

Ob. 1

Ob. 2

E. Hn.

Bsn. 1,2

C. Bn.

Clar. 1

Clar. 2

Clar. 3

B. Cl.

S. Sx.

A. Sx.

T. Sx.

B. Sx.

1,3 Hn.

2,4 Hn.

1,2 Trum.

3 Trum.

Tbn. 1,2

B. Tbn.

Euph.

Tuba

Timp.

Perc 1 (sn. dr.)

Perc 2 (bs. dr.)

Perc 3 (hihat)

Perc 4 (sus. cym.)

Perc 5 (t.tam)

Pno.

Cb.

*pp*

*ff*

choke!



U ♩ = 100

♩ = 90 molto ritard.

Picc. *p* *f* *mf* *f*

Fl. 1 *p* *f* *mf* *f*

Fl. 2 *p* *f* *mf* *f*

Ob. 1 *p* *f* *mf* *f*

Ob. 2 *p* *f* *mf* *f*

E. Hn. *p* *f* *mf* *f*

Bsn. 1,2 *f*

C. Bn. *f*

Clar. 1 *p* *f* *mf* *f*

Clar. 2 *p* *f* *mf* *f*

Clar. 3 *p* *f* *mf* *f*

B. Cl. *f*

S. Sx.

A. Sx.

T. Sx.

B. Sx.

1,3 Hn. *pp* *f* *fp* *f* *mf* *f*

2,4 Hn. *pp* *f* *fp* *f* *mf* *f*

1,2 Trum. *pp* *f* *fp* *f* *mf* *f*

3 Trum. *pp* *f* *fp* *f* *mf* *f*

Tbn. 1,2 *pp* *f* *fp* *f* *mf* *f*

B. Tbn. *f* *fp* *f* *mf* *f*

Euph. *f*

Tuba *f*

U ♩ = 100

♩ = 90 molto ritard.

Timp. *f* *fp* *mp* *mf* *f*

Perc 1 (sn. dr.) *f* *fp* *mp* *mf* *f*

Perc 2 (bs. dr.) *f*

Perc 3 (cr. cyms.)

Perc 4 (sus. cym.) *pp* *ff* *sm. sus. cym.* *p* *f* *mf* *f*

Perc 5 (t.tam) *f* *to glock*

Pno. *f* *mf*

Cb. *f*

V ♩ = 72

Picc. *ff*

Fl. 1 *ff*

Fl. 2 *ff*

Ob. 1 *ff*

Ob. 2 *ff*

E. Hn. *ff*

Bsn. 1,2 *ff*

C. Bn. *ff*

Clar. 1 *ff*

Clar. 2 *ff*

Clar. 3 *ff*

B. Cl. *ff*

S. Sx. *ff*

A. Sx. *ff*

T. Sx. *ff*

B. Sx. *ff*

1,3 Hn. *ff*

2,4 Hn. *ff*

1,2 Trum. *ff*

3 Trum. *ff*

Tbn. 1,2 *ff*

B. Tbn. *ff*

Euph. *ff*

Tuba *ff*

V ♩ = 72

Timp. *ff*

Perc 1 (sn. dr.) *f*

Perc 2 (bs. dr.) *ff* to tam-tam

Perc 3 (cr. cyms.) *ff*

Perc 4 (tri.) *ff* triangle

Perc 5 (glk.) *ff* glock

Pno. *ff*

Cb. *ff*



Picc.

Fl. 1

Fl. 2

Ob. 1

Ob. 2

E. Hn.

Bsn. 1,2

C. Bn.

Clar. 1

Clar. 2

Clar. 3

B. Cl.

S. Sx.

A. Sx.

T. Sx.

B. Sx.

1,3 Hn.

2,4 Hn.

1,2 Trum.

3 Trum.

Tbn. 1,2

B. Tbn.

Euph.

Tuba

Timp.

Perc 1 (sn. dr.)

Perc 2 (L.tam) *tam-tam*

Perc 3 (cr. cym.)

Perc 4 (tri.)

Perc 5 (glk.)

Pno.

Cb.

Picc. *mf*

Fl. 1 *mf*

Fl. 2 *mf*

Ob. 1,2

E. Hn.

Bsn. 1,2 *mf*

C. Bn. *mf*

Clar. 1 *mf*

Clar. 2 *mf*

Clar. 3 *mf*

B. Cl. *mf*

S. Sx. *mf*

A. Sx. *mf*

T. Sx. *mf*

B. Sx. *mf*

1,3 *f*

Hn. 2,4 *f*

1,2 *mf*

Trum. 3 *mf*

Tbn. 1,2 *mf*

B. Tbn. *mf*

Euph. *mf*

Tuba *mf*

Timp. *mf*

Perc 1 (sn. dr.) *mf*

Perc 2 (t.lam) *f*

Perc 3 (cr. cyms.) *mf*

Perc 4 (tri.) *mf*

Perc 5 (glk.)

Pno. *mf*

Cb. *mf*

207

208

209

210



X ♩ = 72

Picc.

Fl. 1,2

Ob. 1,2  
ritard.  
*p* *mf* *p* *pp*

E. Hn.

Bsn. 1,2

C. Bn.

Clar. 1  
*pp* *p*  
(one player)

Clar. 2  
*pp* *p*  
(one player)

Clar. 3  
*pp* *p*  
(one player)

B. Cl.

S. Sx.

A. Sx.

T. Sx.

B. Sx.

1,3 Hn.  
Solo lontano  
*mp* *p*

2,4

1,2 Trum.  
3

Tbn. 1,2

B. Tbn.  
*pp*

Euph.  
*pp*

Tuba  
*pp*

X ♩ = 72

Timp.

Perc 1 (sn. dr.)

Perc 2 (tri.)  
triangle  
*p* *mp* *p* *mp*

Perc 3 (chms.)  
chimes  
*p*

Perc 4 (vib.)  
vibraphone  
(keep ped. depressed) *p*

Perc 5 (glk.)  
*p*

Pno.

Cb.  
*pp*



Y

Picc. *f*

Fl. 1 *mf sub p*

Fl. 2 *mf sub p*

Ob. 1 *mf sub p*

Ob. 2 *mf sub p*

E. Hn. *p*

Bsn. 1,2 *p*

C. Bn. *p*

Clar. 1 *mf sub p*

Clar. 2 *mf sub p*

Clar. 3 *tutti p*

B. Cl. *mf sub p*

S. Sx. *ord. p*

A. Sx. *ord. p*

T. Sx. *ord. p*

B. Sx. *p*

*pp*

1,3 Hn. *ff*

2,4 Hn. *ff*

1,2 Trum. *ff*

3 Trum. *ff*

Tbn. 1,2 *ff*

B. Tbn. *ff*

Euph. *ff*

Tuba *ff*

Y

Timp. *p*

Perc 1 (sn. dr.) *ff* choke!

Perc 2 (bs. dr.) *ff*

Perc 3 (chms.) *f*

Perc 4 (vib.) *f*

Perc 5 (glk.) *f*

Pno. *f*

Cb. *p*

*decresc.*

*pp*

*ritard. poco a poco*

Solo

This page contains the musical score for measures 232 through 235. The score is arranged in a system with multiple staves. The instruments listed on the left are: Picc., Fl. 1, Fl. 2, Ob. 1, Ob. 2, E. Hn., Bsn. 1,2, C. Bn., Clar. 1, Clar. 2, Clar. 3, B. Cl., S. Sx., A. Sx., T. Sx., B. Sx., Hn. 1,3, Hn. 2,4, Trum. 1,2, Trum. 3, Tbn. 1,2, B. Tbn., Euph., Tuba, Timp., Perc. 1, Perc. 2 (tri.), Perc. 3, Perc. 4 (vib.), Perc. 5 (glk.), Pno., and Cb. The score features a variety of musical notations including notes, rests, slurs, and dynamic markings such as *pp*, *p*, *mp*, and *pp*. A 'Solo' marking is present above the Piccolo staff in measure 233. A 'triangle' marking is present above the Percussion 2 staff in measure 234. The tempo marking *ritard. poco a poco* is repeated at the top of the page and above the Timp. staff in measure 233. The piano part (Pno.) has a complex texture with multiple voices and dynamic changes. The woodwind and string parts are mostly silent or have simple accompaniment. The percussion parts have specific rhythmic patterns, including a triangle in measure 234.