
DRUM 'N' EUPH

BENJAMIN DEAN TAYLOR

for solo euphonium and electronic audio track

transcription dedicated to

BLAKE BIRMINGHAM

Perusal Score

2020

Duration: 7:00

Music typeset by the composer

Copyright © 2020 by Benjamin Dean Taylor, Bloomington, Indiana
Printed in Indiana, USA

All Rights Reserved

No part of this publication may be reproduced in any form by any electronic or mechanical means (including photocopying, recording or information storage and retrieval) without permission in writing from the publisher.

Taylor, Benjamin Dean

- *DRUM 'N' EUPH*, solo euphonium and electronic audio track

www.benjamintaylormusic.com

Instrumentation

Solo Euphonium

Electronic audio track (digital file playable on any device)

Duration

7:00

Technical Note - electronic audio track

The electronic audio track is not optional. This work is intended to be as easy and straight-forward as possible. It can be performed without any special equipment such as microphones, interfaces, mixing board, earbuds, or click track. Simply download the electronic track onto a laptop or any device that will play back audio and connect that device to speakers. The piece is as simple as hitting play at the beginning of the work and then following the tempo of the electronic track.

The ideal setup for performance will have a stereo pair of speakers facing the audience (placed on the right and left side of the lip of the stage), and a monitor onstage for the performer. During performance, it will be helpful to have an assistant to start the track (and also ride the faders at a mixing board, if available). The track must be able to be heard by the audience at an equal dynamic level to the soloist so that they are heard as one mega-instrument.

Please email benjamintaylormusic@gmail.com to download the audio track

(Note that there are two versions of the track. One is at quarter note equals 152, and the other is faster, at quarter note equals 170)

About the Composer



Benjamin Dean Taylor is a composer of contemporary art music. His energetic, adventurous music provides a uniquely refreshing sonic experience for performers and audiences alike. Trained as a trumpet player and pianist, he performs with and writes music for a variety of chamber ensembles, jazz combos and big bands, wind bands, orchestras, choirs, and experimental ensembles. He received degrees in music composition from Indiana University, Brigham Young University and Bowling Green State University. Dr. Taylor's prizes and honors include winner in the Frank Ticheli Composition Competition, a BMI Student Composers Award, four Barlow Endowment Commissions, and an ASCAP Young Jazz Composer Award. His music is frequently performed in the United States and abroad. Dr. Taylor resides in Bloomington, Indiana, with his wife and five sons.

BENJAMINTAYLORMUSIC.COM

DRUM 'N' EUPH

transcription dedicated to Blake Birmingham

BENJAMIN DEAN TAYLOR
(ASCAP)

$\text{♩} = 170 \text{ (or 152)}$

9

12 thumpin' *f*

13

16

19 20

22

25 28 lyrical, sweet *mf*

29

f *mp* *mf* *p*

36 meaty

(optional 8vb)

42 (drums) 47 relaxed, cool

4

mp

50

55

mf

59

f

63 growing

p

cresc. poco a poco

67

71

70

73

76

76-81: Bass clef staff with a key signature of one flat. Measures 76-81 contain a melodic line with eighth and sixteenth notes, including triplets. Measure 81 ends with a triplet of eighth notes marked "(drums)".

ff

82 lyrical, sweet

82-87: Bass clef staff with a key signature of one flat. Measures 82-87 contain a melodic line with half and quarter notes, mostly beamed together. Measure 82 is marked "82 lyrical, sweet".

mf

88

88-93: Bass clef staff with a key signature of one flat. Measures 88-93 contain a melodic line with half and quarter notes, mostly beamed together.

94

94-97: Bass clef staff with a key signature of one flat. Measures 94-97 contain a melodic line with half and quarter notes, mostly beamed together.

98 thumpin'

98-102: Bass clef staff with a key signature of one flat. Measures 98-102 contain a melodic line with eighth and sixteenth notes, including triplets. Measure 98 is marked "98 thumpin'".

f

99

99-104: Bass clef staff with a key signature of one flat. Measures 99-104 contain a melodic line with eighth and sixteenth notes, including triplets.

103

103-106: Bass clef staff with a key signature of one flat. Measures 103-106 contain a melodic line with eighth and sixteenth notes, including triplets.

108

108-110: Bass clef staff with a key signature of one flat. Measures 108-110 contain a melodic line with eighth and sixteenth notes, including triplets. Measure 108 is marked "108".

p

107

107-110: Bass clef staff with a key signature of one flat. Measures 107-110 contain a melodic line with eighth and sixteenth notes, including triplets.

111

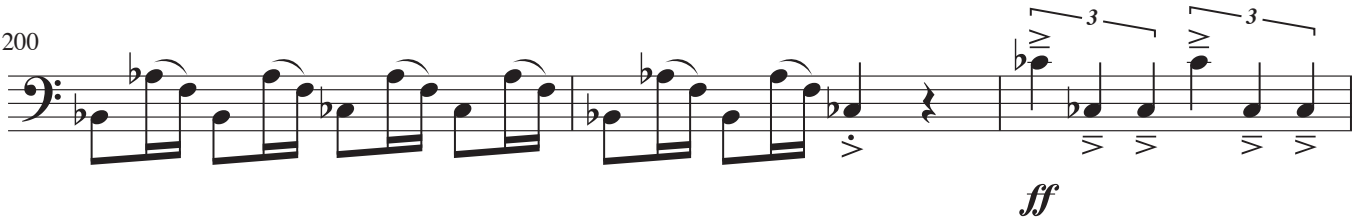
111-114: Bass clef staff with a key signature of one flat. Measures 111-114 contain a melodic line with eighth and sixteenth notes, including triplets. Measure 111 is marked "111".

mf

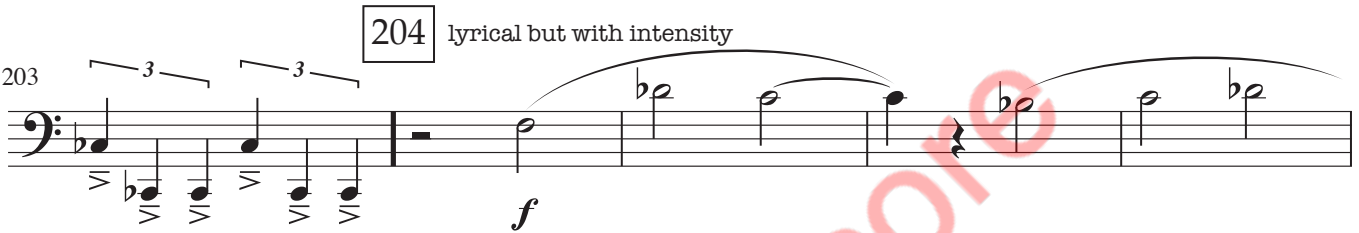
198



200



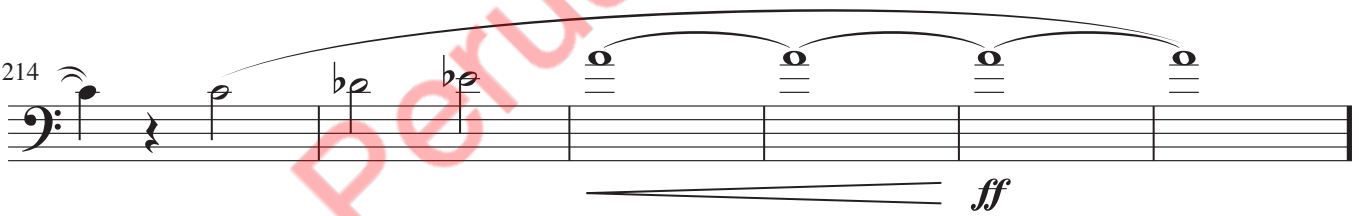
203



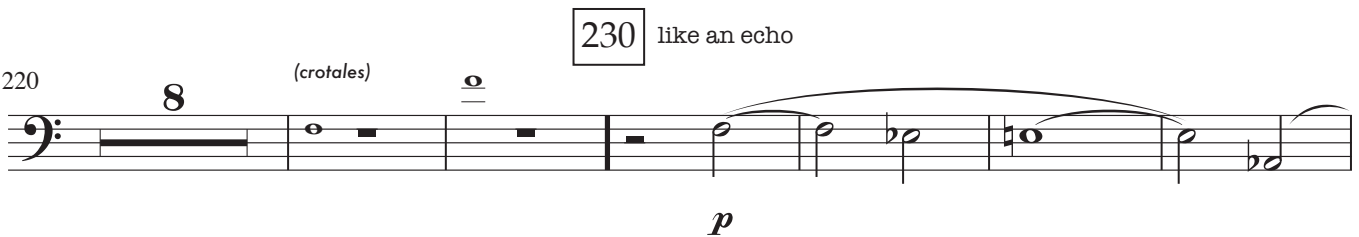
208



214



220



234

